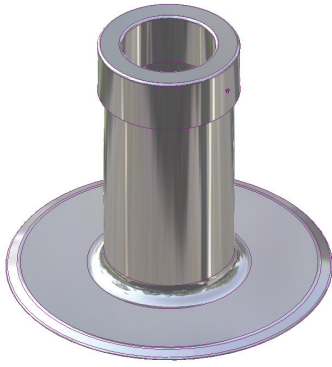


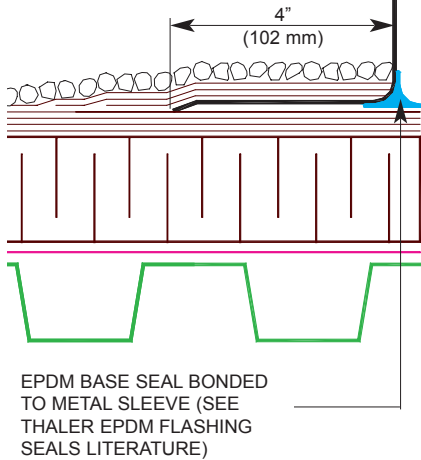
# ROOF SPECIALTIES SJ-24 / SJ-25 REMOVABLE CAP STACK JACK™ FLASHINGS (Uninsulated)



TRADE SIZES  
2" (51 mm)  
3" (76 mm)  
4" (102 mm)  
5" (127 mm)  
6" (152 mm)  
7" (178 mm)  
8" (203 mm)  
10" (254 mm)

MODEL	HEIGHT
SJ-24	12" (305 mm) high
SJ-25	18" (457 mm) high

CONVENTIONAL ROOFING ILLUSTRATED



VENT PIPE

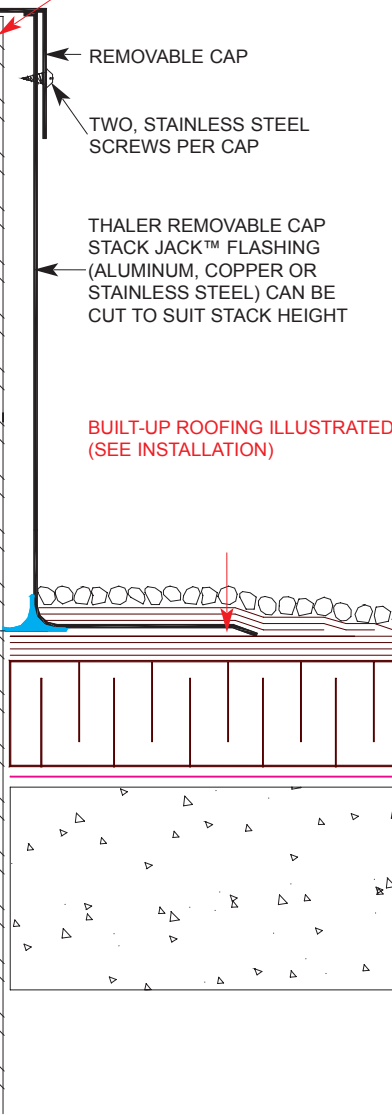
REMOVABLE CAP

TWO, STAINLESS STEEL SCREWS PER CAP

THALER REMOVABLE CAP STACK JACK™ FLASHING (ALUMINUM, COPPER OR STAINLESS STEEL) CAN BE CUT TO SUIT STACK HEIGHT

BUILT-UP ROOFING ILLUSTRATED (SEE INSTALLATION)

12" or 18"  
(305 or 457 mm)



STEEL DECK

CONCRETE DECK

## REMOVABLE CAP STACK JACK™ FLASHING (Uninsulated)

Patented

### INSTALLATION

"Installation Instructions" are provided with every Thaler product. Essentially, Thaler STACK JACK Flashings are installed by placing the flashing over the vent stack and as follows:

**BUR:** Set deck flange in layer of plastic cement and flash in with 3 overlapping layers of felt flashing.

**ModBit:** Torch membrane until bitumen is fluid and set flange into fluid. Flash in flange with two overlapping layers of ModBit and seal with asphalt sealer. Do not overheat (melt) EPDM Base Seal.

**Single Ply:** Set deck flange in layer of membrane adhesive and extend single ply up sleeve to highest elevation possible and clamp membrane to STACK JACK Flashing. Note: for PVC membrane, specify PVC coated STACK JACK by adding suffix P to end of model number, e.g. SJ-24-A-P; weld roofing to deck flange using PVC torch.

**Precautions:** Apply an asphaltic or other type protective coating to aluminum STACK JACK Flashing to a height of 2" (51 mm) above a limestone ballast to avoid corrosive reaction. Also, if coating deck flange with bituminous paint on site, allow 24 hours for drying before applying roof membrane.

**Ordering and Availability:** Specify material required by adding appropriate suffix to model number e.g. SJ-24-A, for aluminum, etc. Available throughout North America. Contact Thaler for list of distributors and current cost information. Most products are readily available from stock.

### DESCRIPTION

Thaler Removable Cap STACK JACK Flashings consist of a metal flashing sleeve with integral flange, matching removable cap (screw fastened), and EPDM Base Seal. Available in aluminum, copper, and stainless steel.

Diameter: 2" (51 mm), 3" (76 mm), 4" (102 mm), 5" (127 mm), 6" (152 mm), 7" (178 mm), 8" (203 mm), and 10" (254 mm).

Height: Model No. SJ-24 is 12" (305 mm) high; SJ-25 is 18" (457 mm) high. Add suffix -A for Aluminum, -C for Copper, and -S for Stainless Steel to model no. e.g. SJ-24-A, etc. as required.

**Prominent Features:** Condensation free. Can be cut to suit vent pipe height. Gases accumulating inside flashing sleeve cannot penetrate ceiling space below due to integrity of EPDM Base Seal (see Thaler EPDM Flashing Seals literature).

**Options:** PVC coated deck flange for PVC roof membrane. Bituminous painted deck flange for BUR and ModBit roof membrane. Vandal proof stainless steel cap (SJ-33). Split flashing (SPJ-2) is available as an alternative if sleeve cannot fit over vent stack.

### RECOMMENDED USE

Suitable for plastic, steel, stainless steel, copper or cast iron vent pipes.

### APPROVALS

CSA Approved to CSA B272-93 (Prefabricated Self-Sealing Roof Vent Flashings).

### WARRANTY

20 year warranty against leaks, condensation and defects in materials and/or manufacture when installed in accordance with Thaler "Installation Instructions". Warranty not valid where metal components are subjected to unusually harsh corrosive environments e.g. pulp mills, mining facilities and similar applications. Stainless steel only is recommended for these installations.

### MAINTENANCE

No maintenance required (maintenance free).

### SPECIFICATION (Short Form)

**Vent stack flashing:** Thaler [SJ-24, 12" (305 mm) high] [SJ-25, 18" (457 mm) high] Removable Cap STACK JACK Flashing (Uninsulated); [.064" (1.6 mm) mill finish 1100-OT alloy aluminum] [.032" (0.831 mm) 24 oz copper] [.031" (0.79 mm) 22 ga. Type 304 stainless steel]; [2" (51 mm)] [3" (76 mm)] [4" (102 mm)] [5" (127 mm)] [6" (152 mm)] [7" (178 mm)] [8" (203 mm)] [10" (254 mm)] diameter; to CSA B272-93; with removable cap and EPDM Base Seal; [PVC coated deck flange][bituminous painted deck flange]; [s.s. vandal proof cap]; manufactured by Thaler Metal Industries, 1-800-387-7217 (Mississauga, Ontario, Canada) or 1-800-576-1200 (New Braunfels, TX), installed as per manufacturer's written instructions. Provide 20 year warranty against leaks, condensation and defects in materials and/or manufacture.